

The Twickenham Tribune



Contents

- Local Postcards
- Twickers Foodie Competitions
- Arts & Entertainment
- DreamWorks
- River Crane Sanctuary
- French Market
- Twickenham Riverside
- Reviews
- StreetInvest
- 20mph Speed Limit
- Valid Planning
- Objections
- Letters

Contributors

- Alan Winter
- TwickerSeal
- Alison Jee
- Erica White
- Lucy Leach
- Sammi Macqueen
- Bruce Lyons
- Mark Aspen
- Strawberry Hill Golf Club
- St Mary's University
- Age UK

EDITORS

- Teresa Read
- Berkley Driscoll



Contact

contact@TwickenhamTribune.com
 letters@TwickenhamTribune.com
 advertise@TwickenhamTribune.com



Published by:
 Twickenham Alive Limited
 Registered in England & Wales
 Reg No 10549345

The Twickenham Tribune is registered with the ICO under the Data Protection Act, Reg No ZA224725

Church Street, Twickenham
 Photo by Berkley Driscoll

THE LOCAL POSTCARD PAGE

PART 52. ST ALBAN'S CHURCH – TEDDINGTON

By Alan Winter

Probably the largest church in the old Borough of Twickenham. St Alban's stands in Ferry Road on the junction with High Street, Manor Road and Kingston Road. It fell into disuse and disrepair in the 1970s and the Church of England leased it to the appropriately named Landmark Arts Centre charity in 1995.

Grade II listed in 1952, the church was built in late Victorian times during 1887-89. Consecrated in 1896, it is considered to be incomplete, a church that was nearly but not quite ever finished. A vast French Gothic style church that towers over the east end of Teddington High Street but lacking a tower which would have completed the original design. Its green copper

roof is original but again some of the flying buttresses to the nave are incomplete.



St Alban's was known by some, perhaps rather grandly, as the 'cathedral of the Thames valley'. Pevsner – in the 'Buildings of England' – describes it as bewildering in its size, with tall clerestory, flying buttresses, vaulted chancel, all of ashlar stone, 'very high and very correct'.

Our two postcards this week take us inside the church and we can see a full length interior view as well as a detailed look at the chapel.

Apart from the many regular community based activities, in recent years the Landmark has also become a great venue for music. My wife and I have enjoyed excellent performances by the Strawbs and Kast-Off Kinks who, with original band members in their line-ups can dip into some 50 years of their

respective song books. Today the Landmark hosts Art, Textile and Wedding Fairs along with Film and Book clubs. The annual exhibition of the Richmond and Twickenham Photographic Society is also a regular event.

If you have any postcards to dispose of, any comments on this subject, or ideas for future articles, please drop me a line at alanwinter192@hotmail.com

POSTCARDS WANTED

Cash paid for Old Postcards
& postally franked envelopes.

Required by local collector / dealer.

Please ring Alan to discuss on
07875 578398

Twickers Foodie

A RIGHT ROYAL FESTIVE FEAST!

By Alison Jee

This weekend we should all be heading off to Hampton Court Palace. It has one of our nearest ice rinks this Christmas, (as there isn't one here in Twickers this year) resplendent in front of the glorious palace with its Tudor chimneys. It looks so pretty and festive after dusk when floodlit. And there's a food festival too: BBC Food Food's Festive Feast.



The atmospheric courtyards, home of notorious foodie King Henry VIII are hosting what sounds like a great start to our yuletide celebrations. And it's a good opportunity for some foodie Christmas shopping. The event is hosted in partnership with Historic Royal Palaces.

If you need some top culinary tips, the Feast Kitchen is available for watching chefs and experts take part in live cookery demonstrations. (Included in admission price)

The line-up includes Emily Roux, third generation chef in the dynasty, Anjula Devi, author of *Spice For Life* and Marcus Bean, regular chef on ITV's *This Morning*. There is also live musical entertainment throughout the day.

Food stalls and pop-up bars will bring the 21st Century to those historic courtyards. From sausage rolls to steaming hot churros, there's something to suit all tastes. There is also a range of artisan producers and companies, including the wonderful St Margarets-based chocolatier Urban Village Chocolates, who will be showcasing and selling their Christmas range.

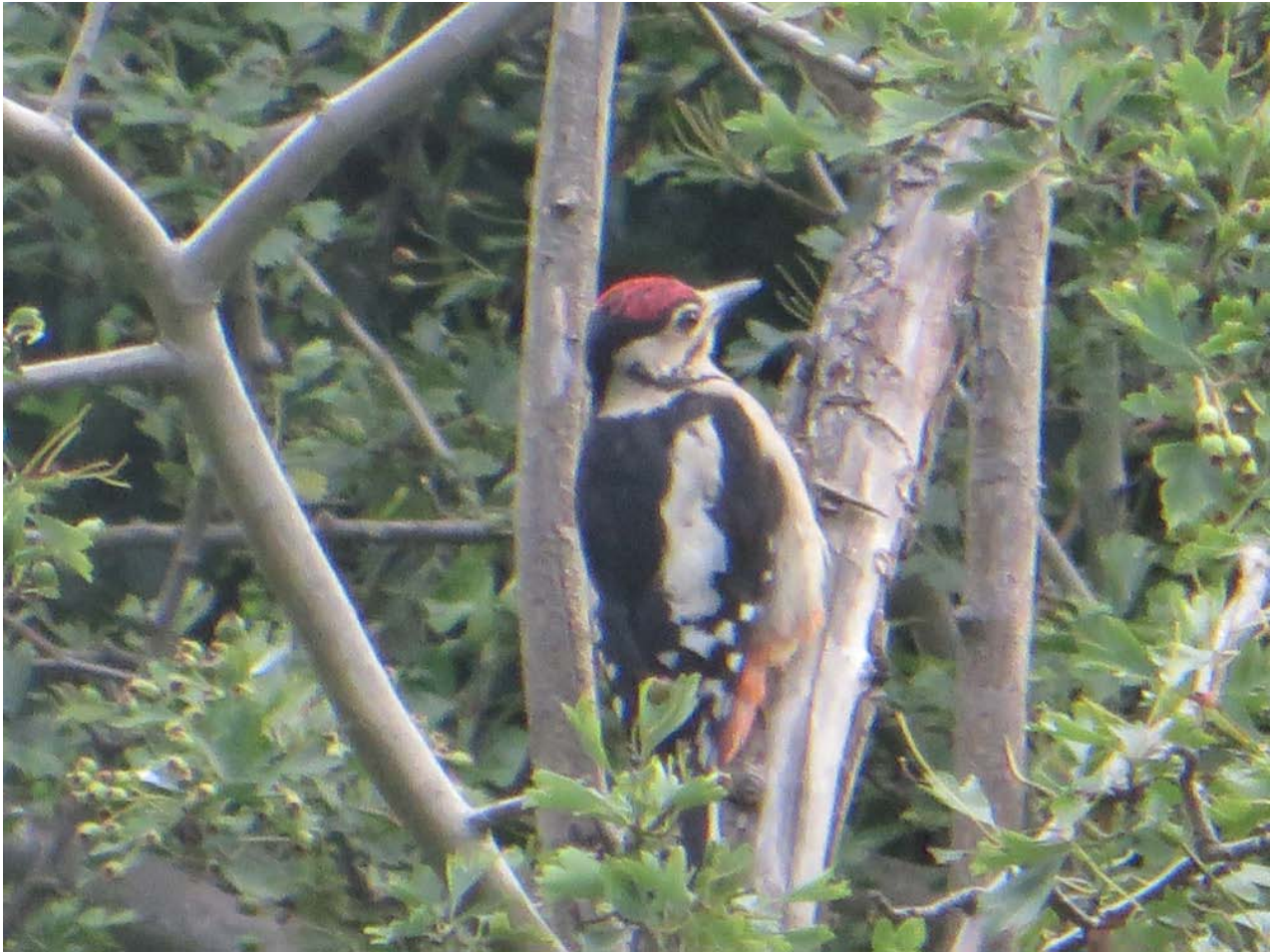


As far as entry prices go, there are a number of differently priced tickets, depending on the time of day you plan to visit, so do plan ahead and check out the website. Most of the tickets include entry to the State Apartments in the palace itself too, which is a bonus, but do make sure you allow enough time for that. Foodies can also head inside to learn what it took to feed up to 600 people twice a day by visiting the famous Tudor kitchens, before stopping by the only surviving royal chocolate kitchen in the country.

With the cold spell forecast, it should be a good festive family day out.

bbcgoodfoodshow.com/festivefeast

Offers and Competitions



Winner of the photographic competition for November is Iain Macqueen, with a Woodpecker taken in Crane Sanctuary

Monthly Photography Competition

Win an 18 hole round of golf for 4 at Strawberry Hill Golf Club
With a glass of wine or beer at the bar afterwards



Email your photo to win@TwickenhamTribune.com
(include your name and postcode) All 4 players must play the same round.

Photos of pets or wildlife, or any scenes taken within the local villages, ie Twickenham, St Margaret's, East Twickenham, Strawberry Hill, Teddington, Hampton Wick, Hampton, Hampton Hill and Whitton/Heathfield

This competition is run in conjunction with [Strawberry Hill Golf Club www.shgc.net](http://www.shgc.net)

STRAWBERRY HILL GOLF CLUB



ADULT GOLF ACADEMY
for returning/new/
novice golfers

The Academy leads to full membership and includes:

- Instruction based package
- Individual and group lessons
- Rules and etiquette
- Social membership
- Access to golf course

For further information:

- Club Manager: Jon Wright 020 8894 0165
- Professional: Peter Buchan 07795 973926



Strawberry Hill Golf Club
Wellesley Road, Strawberry Hill, Twickenham TW2 5SD
Tel: Club Manager 020 8894 0165
Email: secretary@shgc.net
To find out more visit: www.shgc.net



Arts and Entertainment

by Erica White



With two major Christmas productions at the Mary Wallace Theatre where RSS present THE RAILWAY CHILDREN, and at Hampton Hill Playhouse where TTC present THE WIND IN THE WILLOWS concurrently this week, the spotlight will shine on the forthcoming pantomime season in January when details become available. www.richmondshakespeare.org.uk www.ttc-boxoffice.org.

Christmas Concerts abound from this weekend:

COLLIS CHORAL SINGERS feature Bach, Hassler, Lasus, Mendelssohn, Parry and Schubert in a CHRISTMAS CONCERT at St Mark's Church, Teddington, TW11 9DE, where mince pies and mulled wine will be served, on Sunday, 10 December at 7.00pm. www.collischoralsingers.org.uk.

THE NORMANSFIELD CHRISTMAS CONCERT takes place at the Langdon Down Centre, Teddington, TW11 9PS on Saturday, 9 December at 7.30pm, and on Sunday, 10 December, at 7.00pm COMMEDIA PRODUCTIONS presents OPERA ENCORES at the same venue. www.langdondowncentre.org.uk.

At ALL HALLOWS CHURCH, Chertsey Road, TW1 1EW there will be a candlelit performance of HANDEL'S MESSIAH with period orchestra, given by TWICKENHAM CHAMBER CONSORT and LINDEN BAROQUE ORCHESTRA on Saturday, 9 December at 7.30pm www.allhallowstwick.org.uk.

TEDDINGTON CHORAL SOCIETY present a CAROL CONCERT at St Mary's University Chapel, Waldegrave Road, TW1 4SX featuring Christmas music ranging from the Baroque to 21st century on Saturday, 9 December at 7.30pm. www.teddingtonchoral.co.uk.

THE MIDDLESEX YEOMANRY (Duke of Cambridge's Hussars) CONCERT BAND will present their CHRISTMAS CONCERT at the White House, The Avenue, Hampton, TW12 3RN covering Christmas classics, seasonal favourites and carols led by the THAMESIDE HARMONY CHORUS. ww.mych.org.uk

CANTANTI CAMERATI present A TRADITIONAL CHRISTMAS CONCERT with carols, old and new accompanied by organ and brass quartet, with audience participation, and handbells, on Saturday, 16 December at 7.30pm.

HAMPTON CHORAL SOCIETY on Saturday, 16 December at 7.30 give A CONCERT OF CAROLS and CHRISTMAS MUSIC with CAROLS FOR ALL with Soprano and Baritone solos, accompanied by a string quintet and organ.
email: bidwelldi@gmail.com.

More secular musical entertainment is available as usual at The Cabbage Patch Pub, London Road, Twickenham, TW1 3SZ on Sundays, Tuesdays and Thursdays.
But NB: THE EEL PIE CLUB hold their CHRISTMAS PARTY featuring the EEL PIE ALL-STARTS and many guest musicians on WEDNESDAY, 13 December, www.eelpieclub.com.

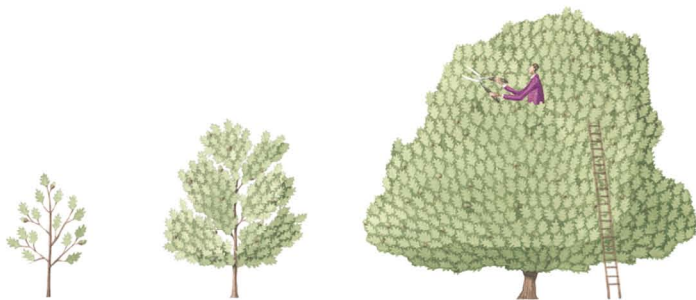
TWICKENHAM JAZZ CLUB perform at the Patchworks Bar at same location on Tuesday, 12 December from 8.00-11.00pm featuring DANNY MOSS Jnr, DAVE CHAMBERLAIN, and LEON GREENING.
www.twickenhamjazzclub.co.uk.

TWICKFOLK at same location, on Sunday, 10 December at 7.45pm present BLACK*SCARR (Johnny Black and Emma Scarr).
www.twickfolk.co.uk.

Christmas Events

St Margaret's Christmas Fair - Sunday 10th Dec on Crown Road with Reindeer.

Hampton Wick Christmas Event - Wednesday 13th, meet at 5.15pm at Hampton Wick Library



The Tree Agency

darryl parkin

The Treehouse
25 King Edwards Grove
Teddington, Middlesex TW11 9LY
Telephone 020 8274 0107
Mobile 07960 123580
Fax 020 8274 0119
info@thetreeagency.co.uk
www.thetreeagency.co.uk

The Tree Agency



TwickerSeal

This week the council published its planning application for the Twickenham Riverside development.

You can see the application here: http://www2.richmond.gov.uk/PlanData2/Planning_CaseNo.aspx?strCASENO=17/4213/FUL

TwickerSeal is somewhat dismayed by the unseemly haste of the council's application and the apparent disregard for the will of local residents.

The council intends to cover this public land with 39 flats and a few retail units; where is the benefit to the community?

Oh, and while not addressing the parking issue on the Embankment at this time, the council proposes removing parking spaces without offering alternative spaces.



A review of the 'Dreamworks Animation in Concert' UK tour by our winner of a family ticket, Lucy Leach

I was absolutely thrilled to have won tickets to DreamWorks Animation in Concert and the night certainly lived up to my expectations!

I took my oldest friend of over 25 years and our two eight year old sons on what would be their first ever concert experience. After a lovely meal at TGI Friday's right next to the arena, we went to find our seats. We



were sat in the centre a few rows from the front and had a glorious view. The incomparable and outstanding Royal Philharmonic Orchestra was all set up in front of a huge screen where all the action would take place.



After a brief and very warm introduction from the conductor - which really helped to set the tone- the magic began!

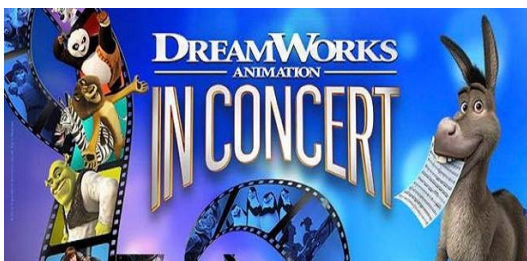
There was a medley of all the best DreamWorks films accompanied by the most beautiful and fitting music played by the orchestra. Then they showed compilations from various DreamWorks classics, such as How To Train Your Dragon, The Croods, Madagascar, Kung-Fu Panda and of course, everyone's favourite, Shrek.

There was a perfect blend of action, romance, humour and drama to satisfy all tastes.

At times, I was so engrossed in what was happening on the screen and the blend so perfect that I almost forgot the music was happening live before my very eyes. Then in turn, I was utterly transfixed by the conductor and the orchestra and couldn't take my eyes off them and how absolutely exquisite they were, completely note perfect.



The audience was a real blend of all ages, from a toddler



cuddled up his parents right through to an elderly couple holding hands. A really enchanting evening for the whole family. Highly recommend.

RIVER CRANE SANCTUARY



Seems everyone wants a little nest in our town.

Male and female Chaffinch visited our hedgerow and Churchview Garages site so let's hope it is still here for a second viewing and potential nest early 2018. The Redwings/Starlings are viewing too with the Blackbird pairs, Nuthatches, Song and Mistle thrushes, Dunnocks, Robins and pals.



We had two bats flying here last Sunday! The Lyre bird won the most popular David Attenborough TV documentary and it was so sad to hear that they also mimicked the chainsaw sound as it destroyed their habitat. (See you tube if you missed this amazing story) Our birds do not have a voice but we do; Speak up if you value habitats near you that are under threat before it is too late and all we have left is photographs and videos to show our children

<http://e-voice.org.uk/rcs/>

Twickenham-based Psychotherapy, Counselling & Self-development

My role is to aid you to be yourself more fully

Counselling and psychotherapy with an experienced professional. I work with both individuals and couples – for details see my [website](#).

'Such an eye-opener! I never dreamed there was so much to me – so many different layers. I really appreciate your patient support and, at times challenge' - Advertising Executive, Richmond



Dr. Chris L. Murphy



www.chrismurphypractice.com
chris@chrismurphypractice.com
07477663383
Twickenham



CHRIS MURPHY PRACTICE

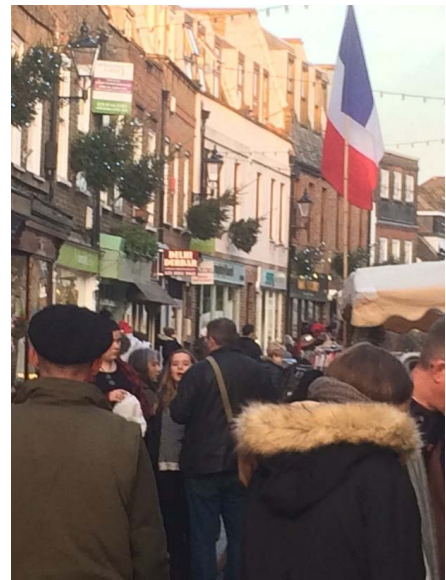
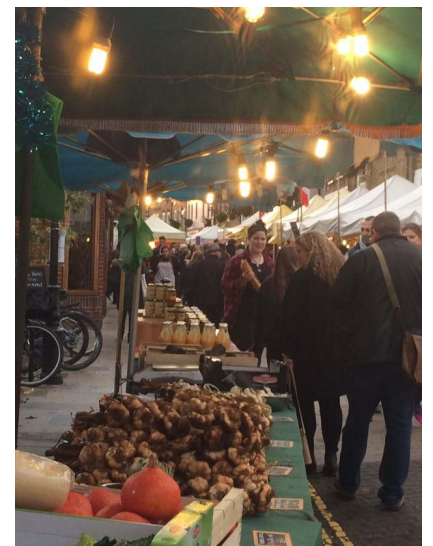
VIVE !! LE BREXIT!!

By Bruce Lyons of the TTBA and the CSA (Twickenham Town Business Association and the church Street Association)

Today (and tomorrow) in the spirit of Anglo French relationships, Church Street welcomes the Annual French Market.

French bread, tarte citron, cheeses of all kinds, sausages, bonbons for those with a sweet tooth, music and much more!

Enjoy while you can – who knows Brexit might make these visitations impossible! But for now we have it, so come down to Church Street this weekend and stock up on all those French delicacies.



Planning process commences for Twickenham Riverside redevelopment

A Planning Application to redevelop Twickenham Riverside has been submitted and will be open to statutory consultation.

Over the past two years the Council has been consulting with residents and businesses in Twickenham on proposals for a new development on King Street / Water Lane and Twickenham Riverside. The development site includes three properties on the corner of King Street and Water Lane, the car park to the rear and the derelict former swimming pool buildings.

The designs submitted have been developed using resident feedback and include two buildings – one on the riverside and one on King Street, stretching down Water Lane. It is proposed that the ground floor of each building would be a mixture of replacement retail, business and community space, with the upper floors providing 39 residential flats (including affordable housing).

The development proposals also include significant open space, which has been designed to complement Diamond Jubilee Gardens, provide a space for community activities, and draw people down to the river.

It is hoped that the Application will be considered by the Planning Committee in March 2018. At the same time as this process, the Council is reviewing the findings of a wider Twickenham parking study to understand the current and future demand for parking in the area. This will result in a future proposal on how parking may be further reduced on the Embankment. This work is separate to the Planning Application.



Council confirms that Twickenham Riverside project would not be delivered in partnership with a developer

Richmond Council has confirmed that it would not be seeking to hand control of the Twickenham Riverside programme to a developer.

Over the past two years the Council has been consulting with residents and businesses in Twickenham on proposals for a new development on King Street / Water Lane and Twickenham Riverside. The development site includes three properties on the corner of King Street and Water Lane, the car park to the rear and the derelict former swimming pool buildings.

As part of the programme of works to create a design for the site, in partnership with the community, the Council has been carrying out a strategic review of the scheme's viability. Working with professional real estate advisors, they have considered how much the scheme would cost to deliver and the wider economic, environmental and social benefits to Twickenham.

Whilst the scheme is still subject to Planning approval, financial viability is also a key factor in ensuring that the project is deliverable.

The Council has always been keen to retain control of the scheme and earlier this year it confirmed that it would deliver the scheme itself. Retaining control was something that residents mentioned during consultations and allows the Council to develop the scheme to a standard that has wider benefits to Twickenham and the local area. It also means that there is no 'developer profit'.

Whilst the Council is not expecting to recover the £6.84m spent purchasing the King Street properties to enable the development to happen this is seen as important investment in the borough. To see more information about the Viability, go to:

www.richmond.gov.uk/twickenham_rediscovered_background

Twickenham Riverside Planning Application

By Teresa Read

Planning Application http://www2.richmond.gov.uk/PlanData2/Planning_CaseNo.aspx?strCASENO=17/4213/FUL has been put forward by the Conservative administration; the Cabinet Member in charge of this proposal for the Twickenham Riverside site is Cllr Pamela Fleming, Cabinet Member for Environment, Business and Community as well as Deputy Leader for the Richmond side of LBRuT.

The land is Council owned; the title of Council land is held by the Mayor and the Burgesses of the London Borough of Richmond upon Thames.

Cllr Fleming has consulted about the plans but has not taken note of a large majority of public opinion. Two Change.Org petitions, an independent and internationally recognised petition site, have been ignored - over 5,700 signatures and thousands of well thought out statements. This body of public opinion far outweighs the number of respondents to the Council's consultation - by many thousands.

“With regard to the composition of the Planning Committee, the Council as the Planning Authority are required to establish a Planning Committee independent of the Cabinet. The Committee is appointed to further strict rules on “political proportionality” and the seats are allocated in accordance with the number of seats each political group has on the overall Council. This will mean that a majority group on the Council has a majority of seats on any Council committee. There is no provision for an independent Planning Committee membership as the Committee is made up of accountable local Councillors elected by residents.

The committee operates further to Richmond council's terms of reference and the Planning Protocol (link here <https://cabnet.richmond.gov.uk/documents/s71195/04.04%20Members%20Guidance%20-%20Planning%20Protocol.pdf>) and approaches planning matters in a non politically partisan way and is separately responsible to council rather than cabinet.” (Paul Evans, the Monitoring Officer)

All councillors on the Planning Committee are very aware of the Cabinet's wish for this planning application to succeed. As far back as 22 July 2015 Cllr Fleming sent a long email to all of the Conservative councillors concerning her view of the Twickenham Riverside issue. A copy was sent to me by a recipient as it contained Cllr Fleming's statements about “my views”.

There is also concern about the speed in putting this planning application forward with the planning consultation period taking place in the run up before and over the Christmas period – a time when many residents will be away or busy with family and festivities. The haste is to make sure the application is heard before purdah – the time before the local elections when this Council application would not be allowed to go before the Planning Committee.

The number of days allocated for the planning consultation is limited to the minimum and not in keeping with the importance of such a sensitive site. The validation of the planning application took place at exceptional speed and with well over a hundred important documents to consider validation took place within a week.

At full Council last week Cllr Fleming refused a request by the leader of the Opposition not to enter into a contract with a developer before the Council election in May 2018.

It is such a shame that this site which is the real heart of Twickenham has become a political football and the wishes of many thousands of residents who choose to make their views known in the public domain are ignored.



FRENCH MARKET



TWICKENHAM

CHURCH STREET

SATURDAY 9th DECEMBER

9am-5pm

SUNDAY 10th DECEMBER

10am-4pm



FRANCE AT HOME

www.franceathome.com

fahmarkets@gmail.com

TwickerTape - News in Brief

RG. I. PR. A. AJ. SS. I. ST. SF. I. PR.
200.8 1/2 66.92 3/4 20.99 16 1/8 76

The next Village Planning Question Times have now been scheduled in Teddington/Hampton Wick, Hampton and Hampton Hill and East Sheen, giving residents the opportunity to quiz the Leader and Cabinet Members about their priorities for local areas. The first events in 2018 have been announced. They are: Teddington and Hampton Wick - 1st February 2018, Teddington School Hampton and Hampton Hill - 27th February 2018, The White House

Councils opposed to expansion at Heathrow have told the Transport Select Committee that the most recent evidence published by the Government continues to demonstrate that a third runway could not be built at the airport without causing unacceptable air and noise pollution.

They say that if ministers continue to support a third runway it will blight the area around the airport while failing to solve the need for extra airport capacity in the South East.

Buses will replace trains in the Teddington, and Shepperton areas Sunday 10th December.

Details at <https://www.southwesternrailway.com/plan-my-journey/planned-improvements/december-works>

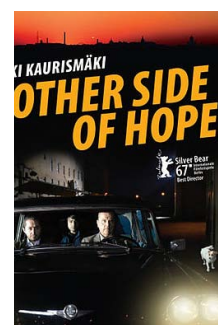
RICHMOND FILM SOCIETY

See www.richmondfilmsoc.org.uk for details of the full 2017/18 Programme and membership, which is £60 (i.e. £4 per film). Tickets are available on the night for non-members at £6.

The first half of the fifteen film season comprises the following films:

12th December – The Other Side of Hope (Finland)

A poker-playing restaurateur meets a Syrian refugee just arrived in Finland. Kaurismäki creates a drama/comedy around Europe's immigration issues in his characteristically lugubrious and deadpan style



STRAWBERRY HILL GOLF CLUB

ADULT ACADEMY TASTER SESSIONS NOW BOOKING

Contact our Professional Peter Buchan

07795 973926



Strawberry Hill Golf Club

Wellesley Road, Strawberry Hill, Twickenham TW2 5SD

Tel: Club Manager 020 8894 0165

Email: secretary@shgc.net

To find out more visit: www.shgc.net



Places People Play



ACROSS

- | | |
|---------------------------------------|---------------------------------|
| 1) Cannabis product | 40) The avant-garde's Yoko |
| 5) Type of beef | 41) Judicial orders |
| 10) Golfer's rental | 42) ___ spumante |
| 14) Assert confidently | 43) Bit of perspiration |
| 15) Brown in a pan | 44) Larry Bird was one |
| 16) Ubiquitous cosmetics ingredient | 46) Salesperson's pitch |
| 17) What souffles do | 49) Harmful bacteria |
| 18) Kind of panel | 51) Bad GPS revelation |
| 19) Unexplainable picked-up feeling | 57) Goddess symbolized by a cow |
| 20) Stress | 58) Extra |
| 23) Large-eyed lemur | 59) Delight or jubilation |
| 24) Showing signs of wear and tear | 60) Convene |
| 25) Total | 61) Sailor buddy |
| 28) Cause for opening a window | 62) Long fishes |
| 30) What a good pilot knows how to do | 63) Blows it |
| 31) Den drug of old | 64) Pulled vehicles |
| 33) "7 Faces of Dr. ___" | 65) Becomes compost |
| 36) Project for homebuilders | |

DOWN

- 1) Instrument with 47 strings
- 2) Good's opposite
- 3) Large butte
- 4) Prevent from happening
- 5) Declare firmly
- 6) Watts of Hollywood
- 7) Takes huge drinks
- 8) Four Corners state
- 9) "Buona ___" (Italian "Good evening")
- 10) Fancy cracker topper
- 11) Choice invitees
- 12) Automaton
- 13) Itsy-bitsy
- 21) Long, long, long time
- 22) Pound the ground
- 25) "But wait, there's more"
- 26) Bounding site?
- 27) Not deceived by
- 28) Lubricates
- 29) Double header?
- 31) "Ars Amatoria" poet
- 32) Family member who may eat off the floor
- 33) "___ we forget"
- 34) Naysayer
- 35) Applying to ears
- 37) Took up residence
- 38) Historic time
- 39) Avoid work
- 43) Wild creatures
- 44) Some New York-style hotdogs
- 45) Big game
- 46) Gunk
- 47) Tough puzzle
- 48) Less cordial
- 49) Related maternally
- 50) Like many hams
- 52) Doctrines
- 53) Australian gemstone
- 54) Fake butter
- 55) Lash mark
- 56) Eliot of the Untouchables

HERE, HERE

By Timothy E. Parker

1	2	3	4		5	6	7	8	9		10	11	12	13
14					15						16			
17					18						19			
20				21							22			
			23								24			
25	26	27						28	29					
30						31	32					33	34	35
36				37	38						39			
40				41							42			
			43						44	45				
46	47	48					49	50						
51					52	53						54	55	56
57					58							59		
60					61						62			
63					64						65			

Solution on Page 18

Lessons for Christmas Poetry at the Adelaide



Mark Aspen

www.markaspen.wordpress.com

Expressing the art of the theatre critic

by David Russomano and others

Performance Poetry, The Adelaide, Teddington, 3rd December 2017

Review by Matthew Grierson

Photographs by Richard Hubert Smith

Good evening class: for though it may not be far off Christmas, tonight's Poetry at the Adelaide has an educational bent. Even as we sit down we notice test papers – well, quizzes – laid out on the tables, asking us to identify the authors of four seasonal quatrains. In kicking things off, host Bob Sheed explains the idea is either to educate us or give us the satisfaction of knowing we could get all the answers right, and as if any more satisfaction were needed each table has a plate of Quality Street ('A Rose by any other name ...') for the seated throng, while Tricia brings round a tray full of mince pies at the interval.



But as I said: education, education, education. Once Bob has taken us through the rubric about fire escape, toilet and returning glasses to the bar, Malisa Elliott gives a short presentation on best practice for poets using social media and how to go about getting published. I'm none too clear on the context for this – it makes me feel as though I've missed some homework – but it's evident that there's more going on with Poetry at the Adelaide than these Sunday night open mics, and in this case Malisa's advice is well received by the audience.



Further insight is offered by tonight's guest poet, David Russomano, who in an interview with Bob's co-host Anne Worthington gives an eloquent account of his creative process and the composition of his collection (Reasons for) Moving. His poems evince a keen sense of place, elegising a house lost under a frozen lake and an abandoned lot where a tyre factory once stood, both in his native Connecticut. Even when he lists the titular reasons that inspire him to leave Worcester Park, their invocation defines that place within the orbit of the ice cream van, under the flightpath of planes and seagulls. Though Russomano says of his travels in Greece, Thailand and Turkey that 'there's so much there to catch your eye', it's evident that he sees beyond the sights and communicates what it means to travel as well. I hope the Adelaide

continues to attract visiting poets of his calibre, and Anne, likewise enthused, encourages her pupils – sorry, audience – to give the visitor polite applause. Indeed, she pops up teacherlike every now and then between readings to offer similar praise to tonight's performers

Read full review at www.markaspen.wordpress.com/2017/12/05/adelaide-russomano



Let your oven
sparkle
this Christmas



Your local independent
oven cleaning,
spares and repair service

www.ovenman.co.uk

Call 020 8185 7069

TwickerPuzzle Solution 14

HERE, HERE

By Timothy E. Parker

1	2	3	4		5	6	7	8	9		10	11	12	13					
H	E	M	P		A	N	G	U	S		C	A	R	T					
14	A	V	E	R		15	S	A	U	T	E		16	A	L	O	E		
17	R	I	S	E		18	S	O	L	A	R		19	V	I	B	E		
20	P	L	A	C	E	21	E	M	P	H	A	S	22	I	S	O	N		
					23	L	O	R	I	S			24	T	A	T	T	Y	
25	A	M	O	U	N	T					28	O	D	O	R				
30	L	A	N	D				31	O	P	I	U	M			33	L	A	O
36	S	I	T	E		37	D	E	V	E	L	O	P		39	M	E	N	T
40	O	N	O			41	W	R	I	T	S				42	A	S	T	I
					43	B	E	A	D				44	C	E	L	T	I	C
46	S	P	I	E	L					49	E	C	O	L	I				
51	L	O	C	A	T	I	O	N	U	N	K	N		54	N	O	W	N	
57	I	S	I	S			58	S	P	A	R	E			59	G	L	E	E
60	M	E	E	T			61	M	A	T	E	Y			62	E	E	L	S
63	E	R	R	S			64	S	L	E	D	S			65	R	O	T	S

CHRISTMAS DAY LUNCH

The Churches in Teddington are once again organising a lunch in Ellera Hall on Christmas Day for the elderly and others who might otherwise be alone that day. If you, or someone you know, might appreciate attending the lunch, put them in touch with Colin and Elizabeth Hicks (contact details below). The lunch will be accompanied by entertainment, mince pies and other refreshments.

Volunteers are also needed to give people lifts to and from the lunch, to help with the preparations and to serve the food. Many of the volunteer tasks can be fitted around a family Christmas. This could be all the more enjoyable for having helped to give some folk, who might otherwise be alone, a truly happy Christmas. The Hampton Fuel Allotment Charity is generously supporting the lunch but additional donations are also welcome both of money but also of small gifts for the guests at the lunch.

To register attendance, or to offer help, contact: Colin and Elizabeth Hicks:
tel 020 8977 8000 or email: office@teddingtonbaptist.org.uk

St Mary's University Update

St Mary's University Welcomes Imams to Open Interfaith Prayer Room and Launch New Muslim Certificate in Religious Studies

Cardinal Vincent Nichols and two leading Muslim clerics joined together today to launch a new Muslim Certificate in Religious Studies at St Mary's University, Twickenham.

On the site of a notable address delivered by Pope Benedict on faith relations in 2010, the religious leaders will open a new interfaith prayer room and announce the launch of the certificate as the newest product of their long-standing dialogue.

The new certificate will aim to support the religious literacy of teachers and enhance the contribution that religion can make to the formation of British values as referenced in the Professional Standards for Qualified Teacher Status.

It will primarily be aimed at those teaching religious education in Muslim schools and will support a cohesive approach to teaching in line with the National Curriculum and contemporary teaching practices.

Imams Sheikh Ibrahim Mogra and Sayed Razawi have been in discussions to develop the concept and the University is now working in consultation with academics from universities across the UK to develop the programme in more detail. The certificate will complement the University's Catholic Certificate in Religious Studies.

Speaking about the launch, Cardinal Vincent Nichols, Chancellor of St Mary's University, said: "I am delighted to welcome our distinguished guests to St Mary's and pleased that they can join us in celebrating our continued commitment to promoting interfaith dialogue in the UK and ensuring that our university provides the most welcoming environment for students of all faiths."

Sayed Razawi said, "We are extremely happy that St Mary's has taken up our call. We are walking shoulder to shoulder, working together. Today here at St Mary's, there is no longer the other; there is an us. This certificate is a partnership, a first and truly authentic as it is ratified by four senior imams. When we talk about integration this is a wonderful way of doing this through education."

Sheikh Ibrahim Mogra said, "those of us involved in interfaith dialogue are often challenged about outcomes. To see the fruits of this dialogue is wonderful and shows what can be done. Thank you to the Cardinal for his leadership which has led to this Muslim certificate which will help understanding of Islam in this country from the perspective of believers' for the benefit of all in society."

Vice-Chancellor of St Mary's University, Francis Campbell said: "St Mary's has a strong record in developing outstanding teachers who go on to teach in faith and non-faith schools and we are pleased to be able to extend this experience to other faiths. It is as important as ever to ensure that there is open and inclusive dialogue around faith in the UK and this Certificate is a crucial contribution."



St Mary's
University
Twickenham
London

Sex, Power and Suppression

Carmen

by Georges Bizet

Ormond Opera, at Ormond Road Richmond until 3rd December

Review by Suzanne Frost



Mark Aspen

www.markaspen.wordpress.com

Expressing the art of the theatre critic

Carmen might well be one of the hardest operas to stage. With the hit density of a Britney Spears best-of album, popular tunes come hard and fast, scene by scene, and the melodies that almost force you to hum along to take away from the impact this tragic opera should have. Keeping it serious, avoiding clichés and finding something new to say in the age old canon – that is the difficult task every director faces with Carmen. All the more praise for Ormond Opera and director Mark Burns who brings a proper ambitious Regiekonzept to the tiny Unitarian Church Building in Richmond. Hearing the usually so vivacious overture come tinkling from a shrill piano is sobering but, with a lot of the oom-ta-ta – and some of the exuberant temperament of the music – gone, the mind is able to sharply focus in on the story that is actually told and all the undertones of the libretto become crystal clear.



Burns shifts the plot from Sevilla to a 1980's England, easily identifiable by a graffiti wall covered in punk rock posters, Labour slogans and anti-AIDS campaigns. Of course with not much of a stage to fill, sparse pieces of scenery - a derelict bus stop, a rusty bench, a wheelie bin – bring all the atmosphere we need. The policemen and their new recruit Don José, in unflattering hi-vi security vests, are lazily flicking through some soft porn magazines. Sex, power and suppressed desires are the themes of this opera, undercurrent in every line of the libretto. Roberto Abate brings a lovely innocence to the country boy Don José, who is technically a bore and a mummy's boy, the puppy love between him and his prim fiancée Micaëla devoid of any sexual tension.

In tumbles life – and chaos – in the shape of the two cigarette girls Frasquita and Mercédés (Sofia Troncoso and Ailsa Mainwaring) and their hysteric gossiping about the shenanigans of La Carmencita, who already sounds notorious before we even meet her. In this production, the cigarette girls and Carmen, the ultimate gypsy woman, are Travellers – a term that carries all the social undertones that Bizet intended. The concept works a charm.



Caroline Carragher is a Carmen of dreams

Read full review at www.markaspen.wordpress.com/2017/12/05/carmen-2/

Photographs by Michael John White

Live Music, Red in Tooth and Claw Geno Washington and the Yo-Yos



Mark Aspen

www.markaspen.wordpress.com

Expressing the art of the theatre critic

Eel Pie Club, Twickenham, 30th November 2017

Review by Vince Francis

Oh, Geno! ... So went the chorus of the Dexy's Midnight Runners' 1980 tribute to Geno Washington. Let us step through the evening to get to the point where we are all cheering thus.

Firstly, the club: the Eel Pie Club has an intimate feel, which is perfectly suited to its purpose. At the stage end, the floor level has been lowered to form a sort of mosh pit. The stage itself is at standard room height, I think, but the effect of this is that it feels elevated. I arrived early, and managed to secure a seat at the stage end of the bar. A good move, as it turned out, as Mr. W had generated a fair amount of interest.



Peter Hammerton opened proceedings and provided us with an eclectic half hour,



encompassing Don't Let Me Be Misunderstood, Walking My Baby Back Home, Rock The Casbah, A Day In The Life, all delivered with skill and soul on acoustic guitar. Peter is an energetic veteran of The Others, a band originally formed at Hampton Grammar School in the 60's. Between songs, he recounted various tales of the Flamingo and Marquee Clubs, all of which were received with knowing nods and nostalgic sentiments.

And so to the headline act. Pirate radio introduced me to the music of my youth; Wilson Pickett, The Four Tops, The Temptations, Jackie Wilson, The Beach Boys, Simon and Garfunkel ... and Geno Washington and the Ram Jam Band occasionally cropped up on playlists, but never seemed to be as prolific on vinyl. However, for the Eel Pie Club, Geno was to front the Yo Yo Band which, which is a power trio comprising: Pinocchio on drums, Steve Duce bass, Buffalo Bill on guitar.

The band opened with Hideaway from John Mayall and the Blues Breakers' Beano album, demonstrating the power available. And what power it is! Crisp, blues lead lines carved out on a classic Telecaster and mounted on a solid foundation of bass and kit, each adding their own curlicues.

Then the man himself appeared and after a short introductory chat, launched into an energetic rendition of High-Heeled Sneakers. We were then led through a tasteful menu of R&B and soul covers, including Little Red Rooster – great slide guitar playing - Jumpin' Jack Flash and Everybody Needs Somebody to Love

Read Vince's full review at www.markaspen.wordpress.com/2017/12/03/geno-wash

Photographs by Jennifer Noble

StreetInvest

On Monday 4th December, 40 people came together over mince pies and a festive drink at the new Exchange Café in Twickenham. The occasion? To raise funds for life-changing work happening with young people on the streets of Mombasa, in Kenya.

East Twickenham based charity StreetInvest, who are about to celebrate their 10th year, had spent the five days prior to the event drumming up support for their week long Christmas campaign, which aimed to put a trustworthy adult into the lives of the estimated 3,000 young people living and working on the streets on Mombasa.

StreetInvest's CEO Duncan Ross, who gave a speech at the reception, said: "Our ambition as an organisation is simple: we do not believe that any child should grow up alone. Which is why our vision is to put a trustworthy adult into the life of every child who lives or works on the street, so they are safer, better supported and valued by their communities."



All funds raised will go towards StreetInvest's work with Glad's House, its local partner organisation based in Mombasa. Glad's House have been working on the city's streets to support children and youth since 2006 and have worked with StreetInvest since 2015. Starting from January, StreetInvest will support Glad's House to lead a network of street work organisations in the region, so that together they can support even more children with their work.

Glad's House CEO, Vicky Ferguson, spoke passionately at the event. "We are there for the child, no matter what they do, what they need, or how long they need us for. Some of our young people will never leave the streets, but we do not see that as a failure. Having one of our workers by their side, guiding them, proving emotional and practical support, makes an incredible difference to the quality of their young lives."

StreetInvest was thrilled to have been selected for the Big Give Christmas Challenge, the UK's biggest online match funding campaign, which offers supporters of participating charities the opportunity to have their donation doubled. The total amount raised over the week, including at the event, was an impressive £12,000 (inclusive of match funding), enough to fund the first year of the Mombasa street work programme.

Georgina Day, StreetInvest's Communications Manager said: "We are so grateful of the local support we receive as a charity and it is especially heart-warming to see at this time of year. Thank you to everyone who came and donated!"



StreetInvest
Investing in children on the street

20mph Speed Limit

Richmond & Twickenham Green Party urges residents to keep up the pressure for 20mph speed limits across the borough.



Richmond & Twickenham Green Party are urging residents to keep up the pressure on Richmond Borough Council to introduce 20mph speed limits after the Council announced they would look at the possibility of bringing them in across the borough.

The Green Party welcomes the Council's change of heart after many years of rejecting residents' petitions to bring in 20mph speed limits on local roads, but hopes they are not just paying lip service. After campaigning for 20mph speed limits to be introduced throughout Ham and Petersham, the Green Party's Andrée Frieze said: "At last the Conservative Council is seeing sense and taking on board what we and the Liberal Democrats have been saying for years.

"But the Council has only committed to 'consider a move towards a 20mph speed limit across the whole borough where appropriate'. Residents can't let them off the hook just yet. We will continue to campaign to reduce speed limits to improve road safety and reduce pollution."

Andree Frieze asks borough residents to ensure the Council keeps to its promise by signing her petition on the council's website (www.bit.ly/20mph-ham), which calls for 20mph speed limits to be introduced across Ham and Petersham.

CONVERSION TO 20MPH

Richmond Liberal Democrats are claiming a victory following the apparent conversion of the Tory administration to accepting the need for 20MPH on the borough's residential roads.

At the recent meeting of council, Cllr Peter Buckwell appeared to signal that this would be the new Conservative policy, a move which was later reportedly supported by Cllr Paul Hodgins at the Kew Question Time event.

Liberal Democrat Transport Spokesperson Cllr Alex Ehmann said "In 2014 the Tories found themselves on the back foot, having recognised the popularity of the Lib Dems' 20MPH pledge, and came up with a policy of offering residents safer speeds in residential roads 'only if they wanted it'. However in spite of many local residents asking for 20MPH in their roads the Tories broke their pledge.

Cllr Ehmann went on to add 'Cllr Hodgins appeared to suggest that residents could have 20MPH after May if the Conservatives are re-elected; but why wait? The Lib Dems haven't changed our policy, we'll introduce 20MPH if we take control in 2018.

So I challenge Cllr Hodgins to put his money where his mouth is and start rolling out this policy now. He can start with all the residential roads whose occupants were conned into believing his party at the last election"



Twickenham & Richmond Liberal Democrats

Making a Valid Planning Objection

If you are objecting to a planning application it is important to make sure you make valid objections. The following list comes from the LBRuT website:

Loss of light or overshadowing, Overlooking/loss of privacy, Visual amenity (but not loss of private view), Adequacy of parking/loading/turning, Highway safety, Traffic generation, Noise and disturbance resulting from use, Hazardous materials, Smells, Loss of trees, Effect on listed building and conservation area, Layout and density of building, Design, appearance and materials, Landscaping, Road access, Local, strategic, regional and national planning policies, Government circulars, orders and statutory instruments, Disabled persons' access, Compensation and awards of costs against the Council at public enquiries, Proposals in the Development Plan, Previous planning decisions (including appeal decisions), Nature conservation, Archaeology, Solar panels.

Material Planning Considerations from Planning Aid England and endorsed by the Royal Town Planning Institute:

- Local, strategic, national planning policies and policies in the local plan
- Emerging new plans which have already been through at least one stage of public consultation
- Pre-application planning consultation carried out by, or on behalf of, the applicant
- Government and Planning Inspectorate requirements - circulars, orders, statutory instruments, guidance and advice
- Previous appeal decisions and planning Inquiry reports
- Principles of Case Law held through the Courts
- Loss of sunlight (based on Building Research Establishment guidance)
- Overshadowing/loss of outlook to the detriment of residential amenity (though not loss of view as such)
- Overlooking and loss of privacy
- Highway issues: traffic generation, vehicular access, highway safety
- Noise or disturbance resulting from use, including proposed hours of operation
- Smells and fumes
- Capacity of physical infrastructure, e.g. in the public drainage or water systems
- Deficiencies in social facilities, e.g. spaces in schools
- Storage and handling of hazardous materials and development of contaminated land
- Loss or effect on trees
- Adverse impact on nature conservation interests & biodiversity opportunities
- Effect on listed buildings and conservation areas
- Incompatible or unacceptable uses
- Local financial considerations offered as a contribution or grant
- Layout and density of building design, visual appearance and finishing materials
- Inadequate or inappropriate landscaping or means of enclosure



1. Panto for the Perplexed

Grierson's Guide for the Pantomime First-Timer

London is a cosmopolitan capital, home to people from all over the world. So it's possible that plenty of its citizens are poorly acquainted with the distinctly British art of the panto, and may be mystified by its popularity and its place in the national culture. Whether we consider them fortunate or unfortunate, it's for those people that I offer the following, to bring them up to speed in time to catch a show or two this festive season.

Part music hall, part Commedia dell'arte, the panto is essentially a rendition of a classic fairy story or folk tale such as Cinderella or Dick Whittington, staged according to a host of its own peculiar theatrical conventions. The style is sufficiently deeply engrained in the British psyche that, although many of us won't have seen a show since childhood, we still immediately recognise (and often wince) when we come across its tropes, so widespread they are. But don't be frightened – the more of these you know, the more fun watching a panto will be.



Frocks appeal

One of the cornerstones of the pantomime is the dame, a larger-than-life portrayal of a woman – usually an aunty, ugly sister or queen of some description – played by a man under the thickest, most outrageous make-up and camper than, well, Christmas.

Girls who (look) like boys

For all the dragged-up men, it's important that, more conscious of gender parity as we now are, the ladies also get a look-in on the transvestism. It's not only Shakespeare who offers a native tradition of gender-bending after all, and the role of principal boy, the young hero of our story, is often taken by a sylph-like young woman.

Innuendo and ribaldry, sweeties showers, slapstick humour, pantomime horses, cheers or jeers, unwritten audience scripts, Matthew Grierson explains all for the virgin panto-goer at: www.markaspen.wordpress.com/2017/12/05/panto-perplex

Matthew goes on to suggest where to go:

Quite apart from what's going on elsewhere in the capital – such as the Palladium's Dick Whittington and the Hackney Empire's Sleeping Beauty – in this corner of London, you not only have Richmond's Aladdin, but there's another at the Beck in Hayes as well as Hammersmith Lyric's Jack and the Beanstalk. In fact, there must be quite a few magic

beans around as there are also versions of Jack and the Beanstalk, in Croydon, at the New Wimbledon and Putney Arts. Meanwhile Hillingdon is having a ball with its Cinderella, as is the OSO in Barnes, and Questors is flying high with Mother Goose. So in short, you're not short of options.

Meanwhile Melissa Syversen has been going behind the scenes:

2. Panto's Fabulously Funny Family

Melissa's Meeting with the Personalities of Pantomime

Pantomime season is upon us once more, boys and girls! T'is that wonderful time of year again. The Christmas lights are shining along the high streets, the Christmas markets and Winter Wonderland have all popped up and we can finally eat mince pies to our heart's content without the guilt. And as we enter the Christmas season, with it comes what is my favourite theatre genre: Christmas pantomime. All over the city, colourful posters of well-loved characters are gazing out at us as we hurry along to finish the Christmas shopping. They all range from Dick Whittington at the Palladium, Jack and the Beanstalk at the Lyric Hammersmith. And of course, Aladdin at the Richmond Theatre.

Now as the premiere is just around the corner, I was lucky enough a few weeks back, to chat with two of the other stars of Aladdin, Issy van Randwyck and Steve Delaney (a.k.a. Count Arthur Strong). I had a lovely chat with both, to the point we might have diverted a bit from the task at hand to discuss other topics such as popular Scandi-noirs and the nature of drama schools. Our main topics, however, were this year's production of Aladdin at the Richmond Theatre and pantomime itself, as a theatre genre and a uniquely British tradition.

When Melissa asks, "What do you think it is about pantomime that keeps attracting audiences?", Issy replies, "Community ... I think it is a coming together of a community", while Steve says, "I think a lot of it is tradition, you know ... It is unique".

Melissa challenge them to describe Aladdin in three words. Steve: "I couldn't do it. No, wait that is four words. 'Couldn't do it.'" Issy: "Family. Fabulous. Funny."

Read more about Melissa Syversen's chats with Issy van Randwyck and Steve Delaney (Count Arthur Strong) at www.markaspen.wordpress.com/2017/12/06/persons-of-panto

Aladdin will be playing at Richmond Theatre from Saturday 9th December to Sunday 14th January. Be sure not to miss it!

Photo credits are: Hackney Sleeping Beauty - Robert Workman; Jack and the Beanstalk - courtesy Lyric, Hammersmith; Pinocchio - courtesy Edmundians.



Morrison's Solicitors Christmas Reception

On Wednesday 6th December the Twickenham Tribune was invited to attend the Morrison's Solicitors Christmas reception in the Wimbledon Room at the Lensbury,



St Mary's University Christmas Drinks Reception

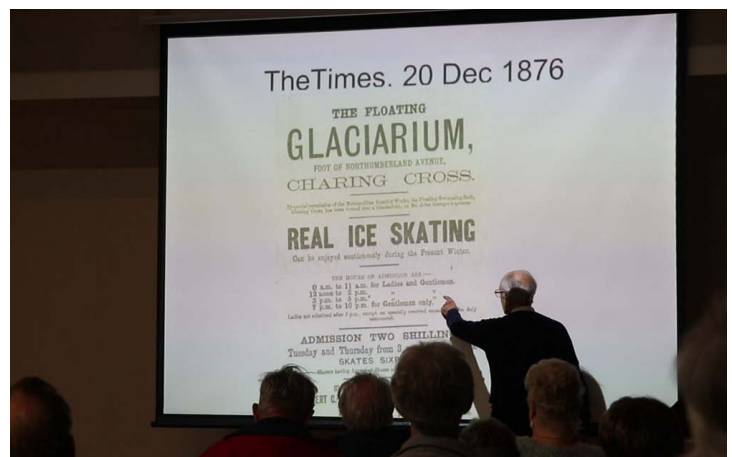
Also on Wednesday 6th December we attended the St Mary's University Christmas reception in the Waldegrave Suite. The Twickenham Tribune was invited by Francis Campbell, Vice-Chancellor of St Mary's University, to a Christmas drinks reception to celebrate links with the local community. The evening was hosted by Bishop Richard Moth, Chair of Governors



Talk to the Hampton Society

On Thursday 7th December the Richmond Environmental Information Centre gave a presentation to the Hampton Society about the Heritage Lottery project: The Most Famous Ice Rink in the World

<http://icerinx.com>





Christmas Pub Lunch

Join us and get in the mood for Christmas!

Thursday 21st December at 12.30pm

**Turkey breast roast dinner, pudding and
a drink for £11.99**

BOOKING IS ESSENTIAL

The William Web Ellis Pub, Twickenham

Contact Sue on 020 8744 1965

communityservices@ageukrichmond.org.uk

www.ageukrichmond.org.uk

Dear Sir,

A letter from the Twickenham Riverside Park team

The Redevelopment of Twickenham Riverside, Letters to & from our Riverside Councillors

Below is the full email/letter trail between the Twickenham Riverside Park team and our rather unresponsive/uninvolved Twickenham Riverside Councillors.

These emails/letters are in response to our original open letter to councillors (published in the Tribune 3 weeks ago). Some text is condensed to minimise space.

From: Twick Riverside

Date: 8 December 2017

Subject: Re: Twickenham Riverside

To: [Cllr Susan Chappell](#), [Cllr Helen Hill](#), [Cllr Benedict Dias](#)

Dear Susan, Helen and Benedict,

Thank you for your email. It will come as no surprise that we are as disappointed with your reply as we are with your very limited involvement in the 2-year consultation process.

I'm afraid that attending a few workshops sessions in 2016 and asking a sop of a question at Council doesn't come close to active involvement in THE key issue in your own ward.

Our full reply is in the attached letter [below].

Yours,

The Twickenham Riverside Park Team

07th December 2017

[Dear Twickenham Riverside Councillors Chappell, Diaz and Hill](#),

We refer to your response to our letter to you dated 17th November.

Thank you for finally replying to us on 03 Dec. Unfortunately, your responses are at best trite, uniform and completely out of touch with what the majority of Twickenham residents want on their riverside site (and have every right to expect). Following the Barefoot and All-In-One Consultations, residents were promised a town square (large enough for a farmers' market as recorded) and a pedestrianised riverside. These basic principles should have been put in place before any 'designs' were considered, but were simply ignored by you. Do not insult our intelligence by claiming that 'nearly 2 tennis courts' stuck on a raised platform at the end of Water Lane, accessed with difficulty by the disabled, and inaccessible by vehicles for servicing (let alone markets), comprise a new town square and 'heart' for Twickenham. The water feature (so strongly mooted by you) would have occupied at least half a tennis court – was this a contributory factor in its sudden demise? Then there is the matter of the massive set of steps located at the corner of the 'square' and discharging unfortunate people onto the busiest corner of the site. All vehicles, those accessing the retained riverside car park, the additional vehicles accessing the proposed adjacent undercroft parking (in the flood zone), and all service vehicles would pass this corner. In addition, the Eel Pie Island loading/unloading area is located immediately adjacent to this corner.

The fact that your new car park and servicing plans result in more traffic along the riverside, rather than less, is unacceptable. This is totally at odds with residents' requests in every consultation to remove vehicles from the riverside.

Do not insult our intelligence with your claims that a majority of residents and businesses support a car park on the riverside – and that, following a clear rejection of a riverside car park by 66% of respondents in your Summer 2017 consultation, you decided to remove this crucial element from further consultation ‘for further study’! Do you honestly think residents are that stupid?

The parking issue has been at the heart of the consultation process since its inception, and is intrinsic to an integrated solution for this site. Parking and traffic are formative of the proposals as clearly spelt out above, and should thus not to be treated as ‘a separate project’ as you advocate in your response. Although we are advocating a ‘car free’ riverside and site, we are not advocating a ‘car free’ development as you claim – only that cars be subservient to people and be parked underground (you should really look at our proposals). Residents would retain access to parking close to their homes.

The proposals by the Twickenham Riverside Park Team do reflect the aspirations of the majority of Twickenham residents. Your claims about the Diamond Jubilee Gardens are nonsense. It is entirely possible within the terms of the Trust to actually increase the size of the DJG to include a town square and riverside park. It is also within the remit of the trustees to advocate development within this area under their jurisdiction to bring this about.

This would enable a whole site solution that would be far more beneficial to the residents of Twickenham than the current proposals. After all, the main purpose of the Riverside Trust is ‘to preserve, protect and improve, for the benefit of the public, the riverside and its environs at Twickenham’. Such an integrated approach with better use of larger spaces would be far more beneficial for everybody as is clear from our proposals and the massive support they have received from residents.

You also criticise us for not providing costs for our proposals – but then neither do you! We can claim, however, that considering the site in its entirety as proposed by us provides a far greater possibility of viability than just developing a relatively small part of the site along Water Lane. It has now been revealed that your proposals are, indeed, not financially viable! The £6.8 million spent on purchasing the Water Lane properties is thus a complete loss – just a further amount to be added to the £2 million of our money being wasted on your futile exercise.

If the consultations, drop-ins, workshops, and pop-up shops were there to ‘sell’ your ideas to the residents of Twickenham, you have failed. These ‘exercises’ were structured in such a way that outcomes did not demonstrate whether a majority actually supported your proposals. Fundamentals never changed – questions dealt with trivia and not essential issues.

The invited ‘stakeholder groups’ you consulted with are predominantly residents of Eel Pie Island, overlap to a great extent with your own hand-picked trustees, and, not surprisingly, agree with everything you say! Representation was selective and disproportional. This is a small selected group of people with vested interests, and certainly not the views of a cross section of Twickenham residents. You thus have no proof whatsoever of majority support for your proposals. On the other hand, we have clear proof that over 2,000 signatories, the majority being Twickenham area residents, unequivocally reject your proposals for the development of our riverside in preference for a clear alternative that would be financially viable.

You simply do not have a mandate to spend another £2m of our money to take your deeply flawed and financially unviable proposals to planning. If you believe in the democratic process under which you were elected, then accept that your proposal has been rejected by the majority of Twickenham residents, and withdraw it. If you believe that this is unclear, then allow the residents of Twickenham to have a clear choice between your proposals and those reflecting what was originally promised as encapsulated in our conceptual proposals. The information is all there to enable informed choices to be made.

But then your subterfuge appears to know no bounds. Not only are you ignoring the democratic process and clearly stated wishes of your constituents, you are compounding this by submitting your planning application with only a three-week period for objection over the Christmas period! You are complicit in destroying an opportunity for a magnificent and viable whole site solution for the benefit of the majority of residents, and supported by the majority. Instead you are supporting a sub-optimal unviable and poor part site development that the majority do not want. Why are you doing this? How are you going to be able to hold your heads up in the community you claim to represent?

Yours sincerely,

On 3 December 2017, Cllr Susan Chappell <Cllr.SChappell@richmond.gov.uk> wrote:

Dear Twickenham Riverside Group

Thank you for your email and letter and sorry for the delay in responding.

Firstly, in response to your further email to Cllr. Hill, we have been very involved in the process and have been to all the workshops and spoken at council on the subject.

The issue of design is subjective and there have been many views expressed throughout the consultation. Apart from the workshops and resident drop-ins, local groups, Twickenham Riverside Trust; Riverside Action Group; Eel Pie Village Group & Eel Pie Resident Association, covering a cross section of local residents, have also been involved in developing the design. The current design has taken into consideration all views and delivers a town square, which is the size of two tennis courts, on the Riverside as well as a link to the DJG as we promised in 2014. The choice of materials and treatments will be key to the design and these will be further developed from the feedback received, indeed, the architects have now made amendments to the designs to reflect the views. This includes, slightly reducing the building heights across the development, introducing stone detailing around windows on the King Street building, toning down the red brickwork on the Embankment and introducing an additional two seasonal 'boat house' units on the Riverside.

In terms of your plans, from what can be seen, it appears to build on the DJG which is something that is not possible without breaking the trust put in place in 2014 and which we promised would protect this open space for a minimum of 125 years and so for us is not an option that we could support. However, the mix of residential, commercial and cafe accepts the need for development to ensure viability.

Parking has been an area on which, throughout the consultation, there have been differing views expressed and this was particularly evident in the parking workshop where it was clear that parking on the Embankment was an important issue, either to keep or remove.

It is the case that residents and around 130 businesses, (vital to the local economy) residing opposite and adjacent to the site require parking and so at this stage the parking is shown as staying, albeit with more residents' bays and less pay and display to reflect the most recent parking survey on current usage.

This being said, we fully recognise the concerns of those who wish to see the Embankment free of cars but this cannot be done in isolation and so we are pleased that as a separate project, the Council has commissioned a number of studies to understand the current demand for parking, but also the demand in the future. The studies also considered general traffic in the wider Twickenham area.

The findings of these studies are currently being reviewed by the Council and over the next few months we will come forward with proposals on how parking may be reduced on the Embankment. This is something which we welcome so that those residents who rely on the parking close to their homes are able to continue to park whilst acknowledging the desire for reduced parking.

Whilst we have seen that your scheme shows underground parking, no costs are shown and, as we are sure you are aware the cost of this is high if all the current spaces were to be re-provided. Equally, car free developments, if the underground parking was allocated to existing residents would need to be carefully considered as there could be an impact outside the CPZ hours if residents of the flats owned cars. Unfortunately, a car free development does not prevent owners having one or more cars.

We believe that this scheme will create a heart for Twickenham which will remain in the ownership of the council to ensure that it of the highest quality for current and future residents of and visitors to Twickenham and, as we are able to, we will look to remove parking from the Embankment provided it is re-provided locally.

Best wishes

Benedict, Helen and Susan, Councillors for Twickenham Riverside

From: Twick Riverside Sent: 27 November 2017

To: Cllr Helen Hill, Cllr Susan Chappell; Cllr Benedict Dias

Subject: Re: Twickenham Riverside

Dear Helen, Susan and Benedict,

We're still waiting to hear from you.

We'd very much like to hear your thoughts on the negative Autumn consultation results in which the site plan and building appearance from all angles were both rated by 850 people at 3.5/10 (ie Disagree). You must admit that that's a very disappointing result after two years of consultation.

It came as no surprise to us that removing the cars from the riverside, providing underground parking and not liking the building design were the most commented on topics. Removing cars from the riverside alone accounted for 46% of all comments.

It seems totally wrong and inevitably sub-optimal to separate access and parking from the development of the rest of the site.

It also seems totally wrong to try to push ahead with a planning application when the fundamentals of your proposals are so unpopular.

We now have more than 2,000 supporters for a full site solution of a Riverside Park and large Town Square with underground parking. We call on you on behalf of all of our supporters, many of whom are also Twickenham Riverside residents, to stop wasting taxpayers money on a doomed scheme and to reconsider your options to include our viable, integrated proposal that has at least 4 times as much support.

Kind regards,

The Twickenham Riverside Park Team

On 21 November 2017, Twick Riverside wrote:

Dear Helen,

We look forward to your response, especially as our Twickenham Riverside Councillors have been very quiet on the subject of the riverside development.

Please take a look at our petition to fully understand our concept proposals and to see the reasons why we reject the Council's increasingly disappointing proposals. <http://bit.ly/2vTZbSp>

Kind regards, The TRPark Team

On 18 November 2017, Cllr Helen Hill wrote:

Many thanks for sending this, you will receive a response in due course.

Kind regards, Helen

Cllr. Helen Hill, Councillor for Twickenham Riverside

From: Twick Riverside

Sent: 17 November 2017

To: Cllr Susan Chappell; Cllr Benedict Dias; Cllr Helen Hill

Subject: Twickenham Riverside

Dear Councillors,

Please find attached an open letter from the Twickenham Riverside Park Team regarding the Council's Twickenham Riverside proposals.

We would very much appreciate your feedback.

Yours, The Twickenham Riverside Park Team

Half Page

Quarter Page Landscape

Quarter Page Portrait

Eighth Page Landscape

Eighth Page

Example advert sizes shown above

Thousands read The Twickenham Tribune

If you are reading this you could be advertising your business with
The Twickenham Tribune. Community rates are available

Contact: advertise@twickenhamtribune.com

View ad details at www.twickenhamtribune.com/advertise

©Twickenham Alive Limited. All rights reserved. No part of this publication may be used or reproduced without the permission of Twickenham Alive Limited. While we take reasonable efforts, this online newspaper cannot be held responsible for the accuracy or reliability of information. The views and opinions in these pages do not necessarily represent those of Twickenham Alive Limited or The Twickenham Tribune. [Terms & Conditions](#)